



# SecureAnyBox5 installation notes

During the installation you will be asked to enter the target folder where the SecureAnyBox5 will be installed, the IP address and port where the SecureAnyBox web interface will be available.

The IP address and port entered while installing will be stored in the setup.ini file, which is created in a folder from which the installer was started.

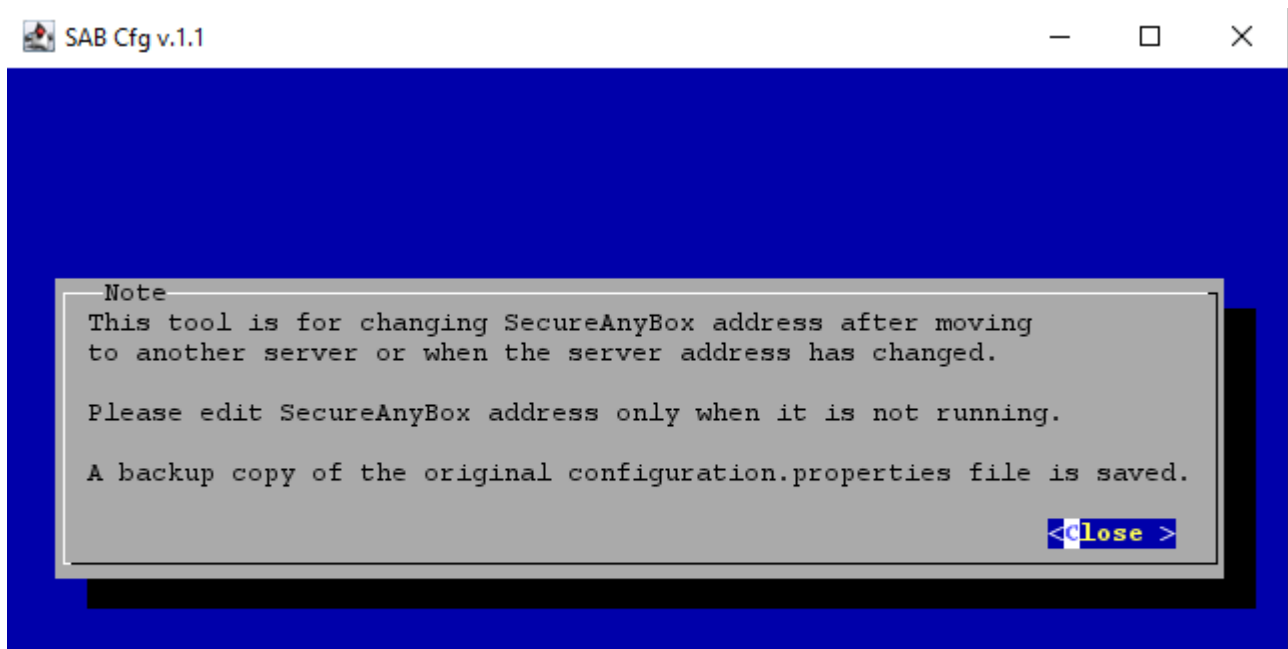
If the setup.ini file is stored in a folder from which the SecureAnyBox installer is started, previously entered values are pre-filled into the installer during the upgrade.

In case you need to change the IP address in the configuration (for example because of moving to another server), use the **changeaddress** utility, which is in the SecureAnyBox5 server folder.

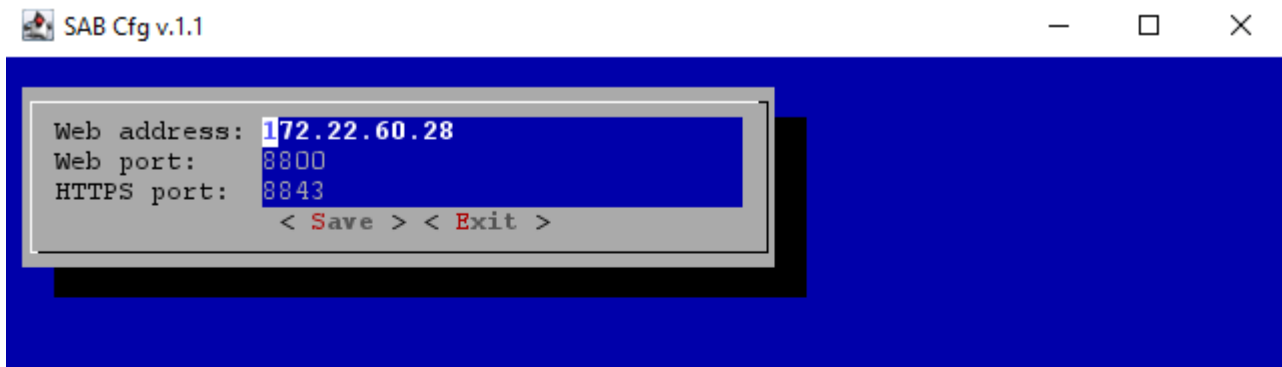
## Change SecureAnyBox5 server IP address and port

Before starting the utility, please stop the SecureAnyBox5 server.

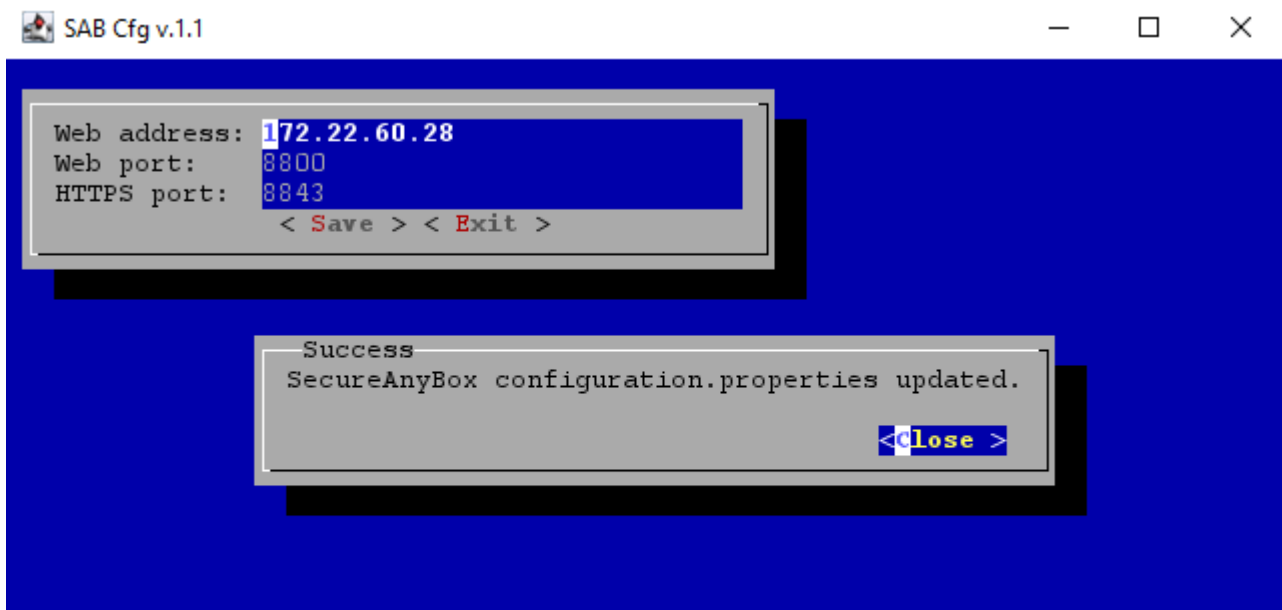
After the utility started, confirm the introductory note by pressing the Enter key.



Set the new IP address and ports for HTTP and HTTPS and save the changes (use the Tab key to move around the utility).



After saving, you will be informed that the changes have been saved.



## JavaService.exe file could not be overwritten

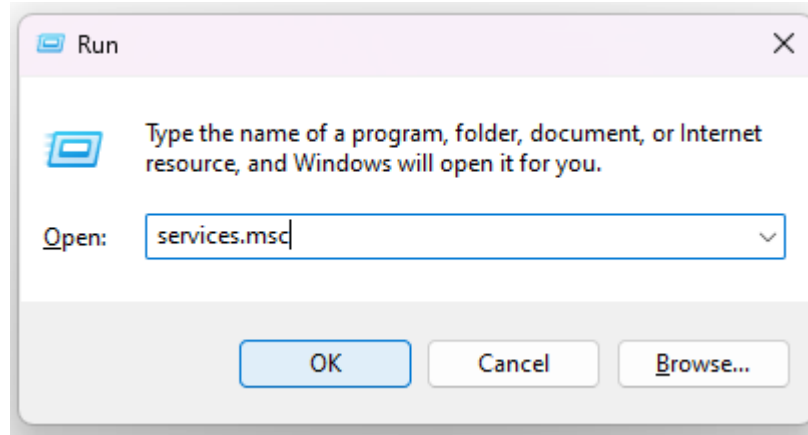
If the upgrading fails due to a problem overwriting the JavaService.exe file, please stop the SecureAnyBoxServer service manually and then proceed with the installation by clicking the Retry button.

If the JavaService.exe file cannot be overwritten even when the SecureAnyBoxServer service is stopped, please contact us.

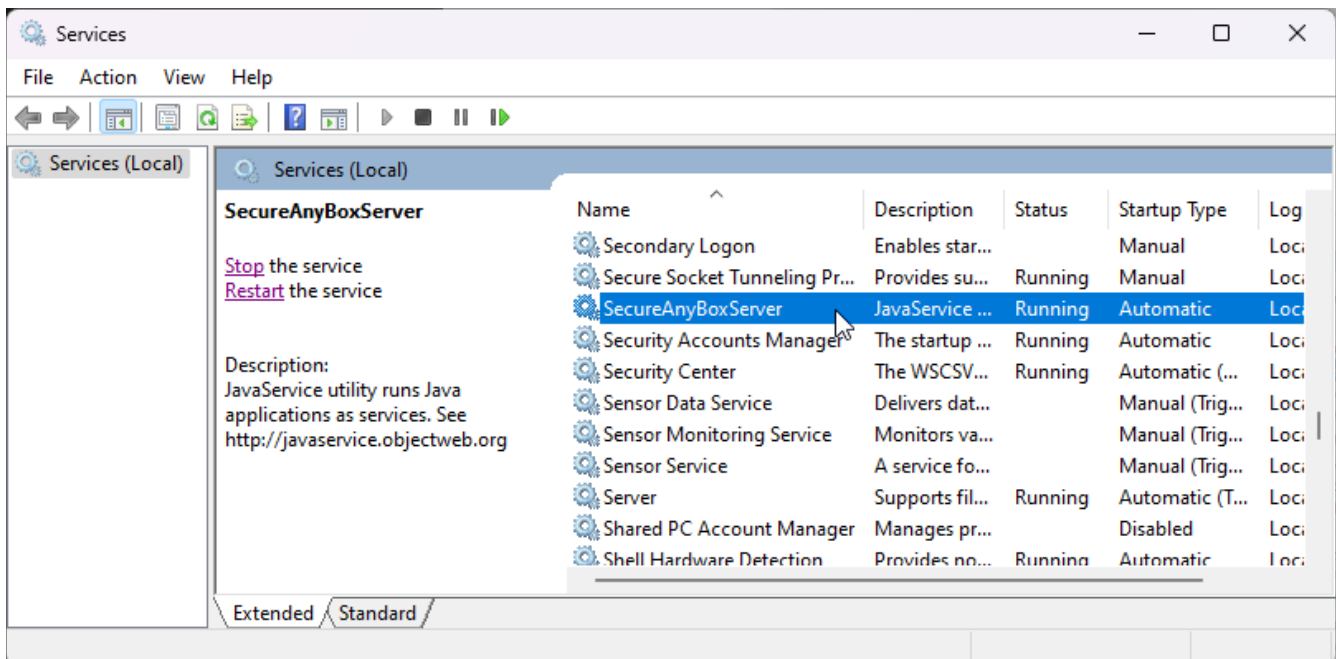
## Stop SecureAnyBoxServer service

To stop the service, please follow these steps:

1) Start Windows Services Manager by clicking the **Windows + R** to open the Run dialog box, type **services.msc**, and click OK button.



2) In the list of services, find the SecureAnyBoxServer service and click on it.



3) To the left side of the services list, click the Stop button. Once the Stop and Restart buttons are no longer displayed, and only the Start is visible, the service is stopped.